

Brief Report

Samed Ngam Excavation

by Vidya Intakosai

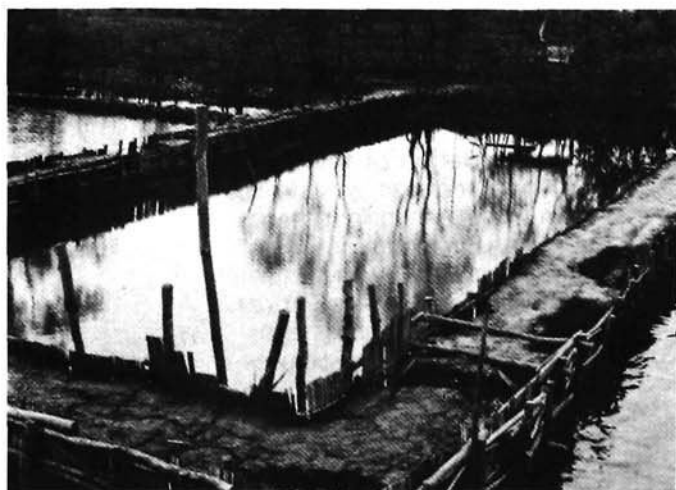
At present, the Thai SPAFA Sub-Centre is undertaking a study of the wreck found in Samed-Ngam in Chantaburi. It is believed to be a Chinese junk which was put in dry dock after the unloading of goods at a nearby sea-port. Unfortunately, its scaffolding collapsed and damaged the hull; thus it was left where it has been found.

This wreck is in a much better condition than the one in Rang Kwein. It measures approximately 21 metres in length and 7 metres in width. The structure itself gives a lot more to study regarding the ancient shipbuilding techniques. Several cross-beams were found intact. The hull planking cross-beams were of some kind of pine wood. To confirm this, they were sent to the Forestry Department for analysis. The underwater excavation team is still awaiting its results however.

Few artifacts were discovered during the excavation. They are mostly blue and white porcelains and Chinese coins, one of which is dated early 19th century AD.

Remains of the Chinese junk uncovered by the Thai excavation team

The Samed Ngam excavation



Four Research Reports on the Srivijayan Empire



The imaginative combination of the methodologies of the natural sciences as well as of the humanities, the combination to which the workshop gave top priority, will assure a range and scale of enquiry that will transform the perspectives of Srivijayan studies in ways beyond the reach of the earlier generation of scholars.

**Papers presented during the SPAFA Consultative Workshop on Environmental and Archaeological Studies on Srivijaya held in Indonesia on 31 August – 11 September 1982.*

...O.W. Wolters